

BRK®

THE PROFESSIONAL STANDARD

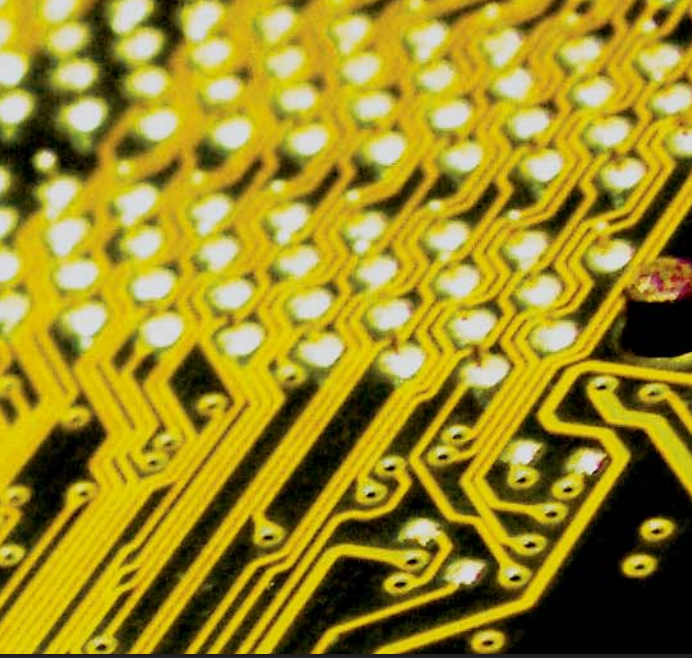
Product Catalog

Electrical Market

Volume 11



Smoke Alarms • CO Alarms • Heat Alarms • Fire Extinguishers



The BRK Story

For over 50 years BRK has made the home-safety products that make your job easier.

In 1964 the founders of BRK Brands, Inc. marketed the company's first commercial smoke alarm. BRK is still here, still making the most recognized professional and consumer brands of residential smoke and CO alarms on the market under the First Alert, BRK, BRK Electronics and Family Gard brand names. BRK has the history, the experience and the products to make your job easier. You can choose our products with confidence! BRK products are designed to save lives. It is a responsibility that is not taken lightly. At BRK, each smoke alarm, carbon monoxide alarm, heat alarm and fire extinguisher is built to the highest standard which has earned the company a leadership role in the building of the home-safety product category. In order to educate communities on how to make a safe home, BRK partners with Fire Services Professionals, schools and other community groups to promote fire prevention and carbon monoxide safety. BRK is committed to serving our customers, from you, the professionals who install the products, to the families who count on them.

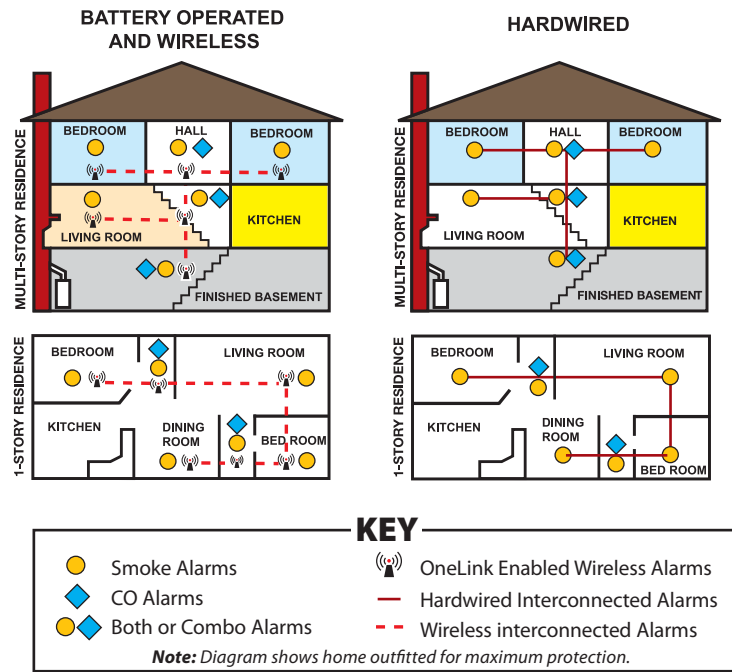
First Alert® Timeline

- 1958 – Organized by Burke (B), Roberts (R) and Kimberline (K)
- 1964 – First commercial smoke alarm marketed by BRK
- 1969 – First battery-powered smoke alarm to receive UL listing
- 1974 – First retail smoke alarm sold under the Sears name
- 1976 – BRK developed its own retail brand, First Alert
- 1986 – Introduced a full line of fire extinguishers under First Alert brand
- 1990 – 100 millionth smoke alarm sold worldwide
- 1993 – Introduced battery-operated carbon monoxide alarm
- 1995 – Introduced the 10-year smoke alarm
- 1997 – Introduced battery-operated combination smoke/CO alarm
- 1998 – Introduced wired-in CO alarm with battery backup
- 2001 – Introduced smoke and CO alarms with exclusive IR feature
- 2002 – Introduced 120-volt interconnectable smoke/CO combo alarm
- 2005 – Introduced OneLink wireless interconnected smoke and CO alarms
- 2006 – Introduced full line of electrochemical CO alarms
- 2007 – Introduced hardwired photo/CO combos alarms with voice
- 2008 – 50 year Anniversary

Residential Placement Guide

for AC 120-volt Interconnectable BRK & First Alert® Products

Agency Recommendations: NFPA 72 recommends a smoke alarm in every bedroom, outside each sleeping area in the immediate vicinity of the bedrooms and on every level, including basements and excluding crawl spaces and unfinished attics. NFPA 720 recommends CO alarms outside of every sleeping area.



Smoke-Sensing Technology

Smoke particles of varying number and size are produced in all fires.

Ionization:

i Ionization technology is generally more sensitive than photoelectric technology at detecting small particles which tend to be produced in greater amounts by flaming fires—which consume combustible materials rapidly and spread quickly. Sources of these fires may include paper burning in a wastebasket or a grease fire in the kitchen.

Photoelectric:

p Photoelectric technology is generally more sensitive than ionization technology at detecting large particles which tend to be produced in greater amounts by smoldering fires—which may smolder for hours before bursting into flames. Sources of these fires may include cigarettes burning in couches or bedding.

For maximum protection use both types of alarms in every bedroom and on each level of your home.

Packaging Icons Make Shelf Identification Easier

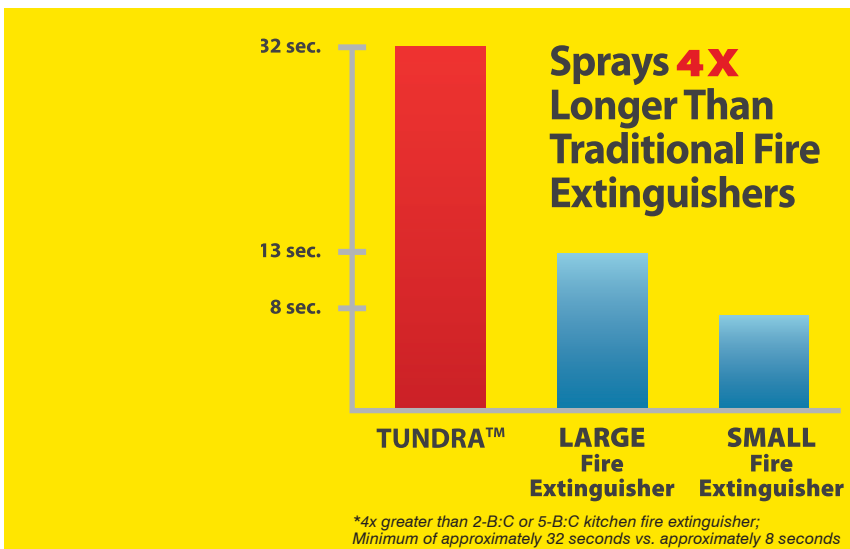
To help make product selection faster and easier, the BRK® packaging features icons to identify the type of alarm, power source and key product features.



<p>Type of Alarm Smoke Alarm, CO Alarm, Heat Alarm, Smoke/CO Combo</p>	<p>Power Source 120-volt AC Hardwired, 120-volt AC Plug-in, 9-volt Battery Backup AA Battery Backup</p>	<p>Key Features OptiPath 360 Technology,[™] Intelligent Sensing Technology,[™] Ionization Sensor Photoelectric Sensor</p>

The FUTURE Of Fire Safety

- **4X more effective than a traditional Fire Extinguisher* (See chart)**
- **Easy Clean up – Won't damage appliance or counter surfaces like a traditional ABC fire extinguisher. Reduces maintenance and clean-up costs.**
- **Intuitive to use – Familiar spray can form. No pins to pull or bulky cans to lift.**
- **Perfect for Apartments, Home, Auto and Marine**
- **No Hazmat Fees**



AF400 Shelf Tray
Qty: 4

AF400-18SD Shelf Display
Qty: 18

AF400-18WP Gravity Feed Display
Qty: 18

ONELINK®

Cost Effective Retrofit & Remodel Solutions

- Wireless interconnect technology eliminates the need to pull wires through existing walls
- Save an average of between \$150 - \$200** per alarm when compared to retrofitting hardwired alarms in existing walls or ceilings
- Faster job turnaround - 4X more jobs completed increases your profits
- Photoelectric sensing technology saves maintenance calls with fewer nuisance alarms.

Putting the Innovation in Renovation

When it comes to alarm renovation and retrofit projects, choices have been limited. Installing battery operated alarms and sacrificing interconnectability or investing in the time and labor to retrofit hardwired alarms have been the only options available.* Until Now! First Alert OneLink eliminates the need to pull wires through existing walls saving time, money and labor.

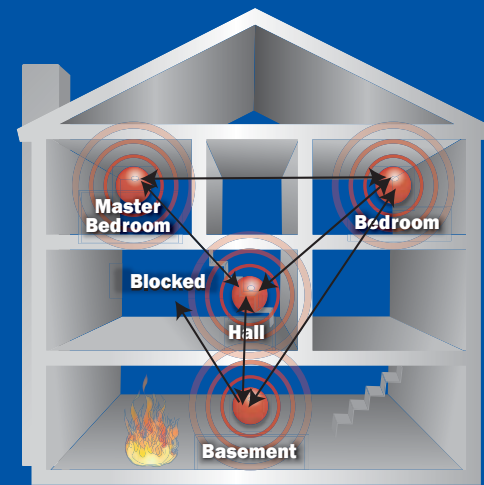
No matter what your renovation project, First Alert OneLink provides a cost effective solution:

Home Addition Projects:

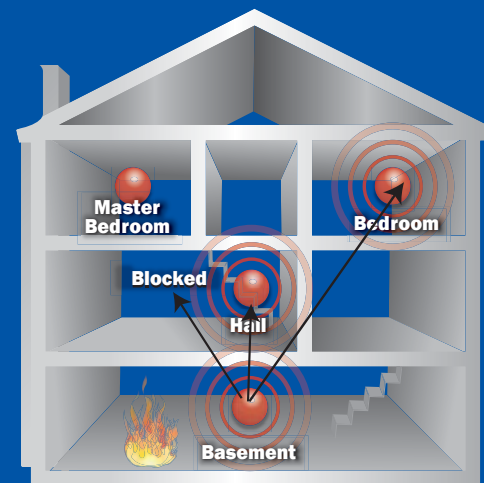
Using the First Alert OneLink hardwired "Bridge Unit" (SA520B), simply replace one hardwired alarm in the existing section and add one to the new section. Wireless technology saves time, material and labor to connect to the existing alarm circuit. Now add standard BRK hardwired alarms as required in the new section and other First Alert OneLink battery alarms in the old section to complete the alarm safety system and bring entire home up to code. All alarms, hardwired and battery, existing and new are now interconnected.

Retrofit Projects:

Property Owners, Facility Managers and Electrical Contractors can all benefit from installing First Alert OneLink alarms for existing retrofit projects. Saving \$150 - \$200** per alarm and increasing job turnaround 4X are key reasons to consider First Alert OneLink alarms for all of your renovation projects.



ONELINK
Mesh Network Communication



Competitive Wireless One-Way Communication

First Alert® ONELINK® Technology

All ONELINK® alarms include these quality innovative features:

- RF Interconnect:** Reliable and secure radio frequency communication between alarms. 915 MHz frequency with 65,000 security codes and 3 channel frequency hopping.
- Photoelectric Technology:** Helps reduce nuisance alarms, especially around kitchens and baths which are more prone to nuisance alarms from cooking smoke and shower steam.
- Optipath 360 Technology™:** Patented technology provides 360 degrees of direct access to smoke sensor.
- Spread Spectrum Horn Tone:** Lower and varying horn frequency makes it easier for elderly with normal age related hearing loss to hear horn. Sweeps through the 2200 - 3400 Hz range.
- Test/Silence Button:** Tests alarm functions and battery. Silences unwanted alarms. Two silence features - Temporarily silence low battery chirp for up to 8 hours before replacing battery or silence unwanted alarm for several minutes.
- Perfect Mount:** mounting bracket keeps alarm secure over a wide rotation range to allow for perfect alignment.
- Dust Cover:** Keeps alarm clean during construction.
- Latching Features:** *Alarm Latch:* Easily identifies initiating alarm even after alarm condition has subsided. *Low Battery Latch:* Identifies which unit is in low battery condition. Both features activate for up to 15 minutes. (excludes SA520B)



SC0500B

Wireless Photoelectric
Battery Combination
Smoke & CO Alarm

Exclusive!
Voice Warning!
WITH LOCATION™

- **Exclusive!** Voice alarm with programmable location. Programmable with up to 11 locations (ex. "basement"). When alarm sounds (if programmed for basement), it will say, "**Warning, Evacuate, Smoke in Basement**". If other First Alert OneLink Voice Warning alarms are located throughout the house they will also signal, "**Warning, Evacuate, Smoke in Basement**".
- Add additional battery-operated **First Alert ONELINK** enabled Alarms to create a wireless safety network.
- End of Life signal
- 5-year limited warranty.



CO511B
Wireless Battery
Carbon Monoxide Alarm

- Easily add CO alarms outside bedrooms and on every level of the home to create a wireless safety network.
- End of Life signal
- 5-year limited warranty.



SA511B
Wireless Photoelectric
Battery Smoke Alarm

- Easily add smoke alarms to every bedroom to create a wireless safety network.
- 10-year limited warranty.



SA520B
Bridge Unit-Wireless & Hardwired
Photoelectric 120-Volt AC/DC Smoke Alarm

- Easily expand an existing interconnected 120V AC system by replacing one alarm in the series with this alarm.
- Add additional battery powered **First Alert ONELINK** enabled alarms to expand without wires.
- 10-year limited warranty.

Mesh Network Communication

First Alert OneLink alarms operate on a "mesh network"; a 2-way communication format that sends, receives and then re-sends the alarm signals. If the initiating alarm signal is blocked from reaching one of the alarms, the mesh network reroutes and re-sends the signal via the other alarms as shown in the illustration. With competitive one-way wireless communication, only the initiating alarm sends a signal which may never be received, leaving the blocked alarm deadly silent.

* Local codes permitting
** Note: Based on average retrofitting costs of time, material and labor to connect to existing alarm circuit, drywall repairs, painting, etc. Special cases that require conduit, wire mold, concrete drilling, etc. would add additional costs and increase savings.



9120 SERIES

120V AC & AC/DC SMOKE ALARMS

- Single button test/silence
- Latching alarm indicator – remembers which unit initiated an alarm
- Smart Technology – helps reduce the number of nuisance alarms
- Perfect Mount – allows for easy alignment of alarm
- 9V battery backup (excludes cat. no. 9120)
- 10 year warranty



Available versions:

- 9120: AC only
- 9120B: AC with 9V battery backup
- 9120AB: AC with 9V Alkaline battery backup
- 9120LB: AC with 9V Lithium battery backup
- 9120B-GFD: 9120B 18-pack Gravity Feed Display
- 9120B6CP: 9120B in bulk Contractor 6-pack

9120 Series – “The smoke alarm standard of excellence.”



7010BSL

120V AC/DC PHOTO SMOKE/STROBE COMBO

- Bright 177 candela strobe light designed for hearing impaired residents
- Smart Strobe has separate flash patterns to distinguish between a smoke/heat or CO danger
- Two AAA battery backup for smoke alarm. (Note: will not power strobe light)
- Meets the requirements of the ADA (Americans with Disabilities Act)
- 1Hz flash rate meets requirements for visual signaling devices
- 10 year warranty



Integrated smoke alarm and strobe light saves installation time and money compared to other manufacturers' hearing impaired kits that require a separate alarm, relay and strobe light.

Available October 2010

3120B

120V AC/DC PHOTO & ION COMBO ALARM

- Dual photoelectric and ionization smoke sensing technologies
- Optipath 360 Technology™ – patented technology provides 360° of direct access to the smoke sensors
- Two Latching features – Alarm Latch: Remembers which unit initiated an alarm. Low Battery Latch: Identifies which unit is in low battery condition
- Two silence features – can silence the low-battery chirp for up to eight hours or temporarily silence an unwanted nuisance alarm
- Two AA alkaline battery backup
- 10 year warranty

Combination Photo & Ion smoke alarms meet codes in Massachusetts and Iowa.



Available August 2010

Smoke & CO Combo Alarms

120V AC/DC PHOTOELECTRIC SMOKE & CO COMBO ALARM W/VOICE

- Voice Warning with Location – Exclusive! A voice will tell you the programmed location of unit and the danger detected (cat. no. SC7010BV)
- Advanced electrochemical CO sensor and photoelectric smoke alarm
- Two Latching features – Alarm Latch: Remembers which unit initiated an alarm. Low Battery Latch: Identifies which unit is in low battery condition
- Two silence features – can silence the low-battery chirp for up to eight hours or temporarily silence an unwanted nuisance alarm
- End of Life signal
- Two AA battery backup
- 5 year warranty

Available versions:

- SC7010B: AC with 2AA alkaline battery backup
- SC7010BV: AC with 2AA alkaline battery backup and voice

SC7010 SERIES



Exclusive! Voice Warning! WITH LOCATION!



7010 SERIES

AC & AC/DC PHOTOELECTRIC SMOKE ALARMS

- Photoelectric smoke sensing technology
- Single button test/silence
- Optipath 360 Technology™ – patented technology provides 360° of direct access to the smoke sensors
- Alarm Latch: Remembers which unit initiated an alarm.
- 9V battery backup (excludes cat. no. 7010)
- 10 year warranty
- Escape light illuminates path to safety (cat. no. 7020B)

Available versions:

- 7010: AC only
- 7010B: AC with 9V battery backup
- 7020B: AC with 9V battery backup & escape light

Recommended for installation outside areas that are prone to nuisance alarms such as kitchens, bathrooms and utility rooms. Escape light recommended for hallway applications.



7020B

120V AC/DC SMOKE & CO COMBO ALARM

- Advanced electrochemical CO sensor and ionization smoke alarm
- Two Latching features – Alarm Latch: Remembers which unit initiated an alarm. Low Battery Latch: Identifies which unit is in low battery condition
- Two silence features – can silence the low-battery chirp for up to eight hours or temporarily silence an unwanted nuisance alarm
- Intelligent Sensing Technology™ – helps reduce the number of nuisance alarms
- End of Life signal
- 9V battery backup
- 5 year warranty

Combination alarms save time and money on installation.

SC9120B



CO5120 SERIES

120V AC/DC CARBON MONOXIDE ALARMS

- Advanced electrochemical CO sensor
- Two Latching features – Alarm Latch: Remembers which unit initiated an alarm. Low Battery Latch: Identifies which unit is in low battery condition
- Two silence features – can silence the low-battery chirp for up to eight hours or temporarily silence an unwanted nuisance alarm
- Intelligent Sensing Technology™ – helps reduce the number of nuisance alarms
- End of Life signal
- 9V alkaline battery backup
- 5 year warranty
- LCD display with memory (cat. no. CO5120PDBN)



Listed to
UL 2034
Standard

CO5120PDBN

Miscellaneous

HD6135FB

120V AC/DC HEAT ALARM W/RATE-OF-RISE

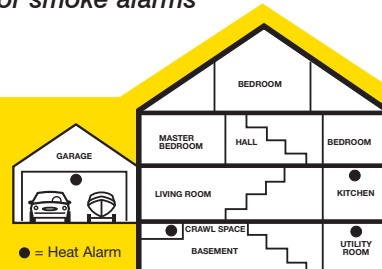
- 135°F Fixed temperature and Rate-of-Rise Thermistor heat sensor
- Remote Control Silence/Test uses most remote controls to temporarily quiet unwanted alarms and test alarm functions
- Latching alarm indicator – remembers which unit initiated an alarm
- Two silence features - can silence the low-battery chirp for up to eight hours or temporarily silence an unwanted nuisance alarm
- 9V battery backup
- For applications not suitable for smoke alarms
- 10 year warranty



Listed to
UL 539
Standard

Understanding Rate of Rise

This allows the unit to sense a heat rise and alarm prior to reaching the fixed temperature. The alarm will sound when the microprocessor senses a temperature rise of a set number of degrees per minute. This enables a more rapid response to a potential fire.



SL177

120V AC SMART STROBE

- Smart Strobe has separate flash patterns to distinguish between a smoke/heat or CO danger
- Bright 177 candela strobe light
- 1Hz flash rate meets ADA, ANSI 117.1, NFPA 72 and UL 1971 requirements for visual signaling devices
- Can be interconnected with BRK/First Alert smoke, heat and carbon monoxide alarms
- 10 year warranty



Listed to
UL 1971
Standard

What's a "Smart Strobe"? Separate flash patterns help a hearing impaired person better distinguish the danger present. Smoke or Heat Alarms: constant 1 flash per second. CO Alarms: 1 flash per second for 4 flashes, then 5 seconds off. Pattern is repeated.

120V AC PLUG-IN CO ALARMS

CO604B with battery back up

- Advanced Electrochemical CO Sensor
- Silence feature - temporarily silence an unwanted nuisance alarm
- 9V battery backup
- End of Life signal & 5 year warranty

CO614B with battery backup and display

Same features as above plus:

- LCD display with memory- clearly shows the hazard and level

Multi-family Manager Tip: 9V batteries are less prone to tenant theft for use in other electronic devices due to their infrequent usage by manufacturers.

CO600 SERIES



CO604B

CO614B

CO600B

- Advanced Electrochemical CO Sensor
- Silence feature - temporarily silence an unwanted nuisance alarm
- End of Life signal & 5 year warranty

CO605B with battery back up

Same features as above plus:

- Front-access battery compartment - allows easy battery replacement
- Two AA battery backup
- Convenient Installation Options: unit plugs directly into the wall or can be mounted higher on the wall using the line cord

CO615B with battery backup and display

Same features as above plus:

- Large display - clearly shows the hazard and level

Save 33% on annual battery replacement costs - Features 2 AA batteries vs. 3 for competitive products.

CO600B/
CO605B



CO615B

Listed to
UL 2034
Standard

120V AC PLUG-IN EXPLOSIVE GAS & CO COMBO ALARM W/BATTERY BACKUP

- 3-way protection against natural (methane) gas, propane gas and carbon monoxide.
- Large display - clearly shows the hazard and level
- Two silence features – can silence the low-battery chirp for up to eight hours or temporarily silence an unwanted nuisance alarm
- Convenient Installation Options: unit plugs directly into the wall or can be mounted higher on the wall using the line cord
- End of Life signal
- 9V alkaline battery backup
- 5 year warranty

GCO1B



Listed to
**UL 1484 &
UL 2034**
Standards

Smoke Alarms



FG250 SERIES

- Hinged cover for easy battery replacement
- Lighted Power and Alarm indicator
- Silence feature
- Tamper resistant locking pin
- RV approved
- 9V battery powered
- 10 year warranty



Available versions:
 FG250B: Carbon zinc battery
 FG250AB: Alkaline battery
 FG250LB: Lithium battery

The most feature rich alarm in its class.

Smoke Alarms

SA340B

10 YEAR SEALED SMOKE ALARM

- 10 Year sealed lithium powercell prevents battery theft
- Tamper proof design
- Perfect Mount – allows for easy alignment of alarm
- Single button test/silence
- 10 year warranty



Never change a battery again!

Saves battery replacement and maintenance costs.
 Recommended for multi-family and dormitory applications.



SA320B

BATTERY PHOTO & ION COMBO ALARM

- Dual photoelectric and ionization smoke sensing technologies
- Optipath 360 Technology™ – patented technology provides 360° of direct access to the smoke sensors
- Two Latching features – Alarm Latch: Remembers which unit initiated an alarm. Low Battery Latch: Identifies which unit is in low battery condition
- Two silence features – can silence the low-battery chirp for up to eight hours or temporarily silence an unwanted nuisance alarm
- Two AA battery powered
- 10 year warranty

Combination Photo & Ion smoke alarms meet codes in Massachusetts and Iowa.



BATTERY PHOTO SMOKE ALARMS

- Photoelectric smoke sensing technology
- Single button test/silence
- Optipath 360 Technology™ – patented technology provides 360° of direct access to the smoke sensors
- Perfect Mount – allows for easy alignment of alarm
- 9V battery powered
- 10 year warranty

Available versions:
 SA710B: 9V carbon zinc battery operated
 SA710AB: 9V alkaline battery operated
 SA710LCN 9V lithium battery operated

BATTERY PHOTO SMOKE ALARM W/ ESCAPE LIGHT

Same as above but with:

- Escape light illuminates path to safety (cat. no. SA720CN)

SA710/720 SERIES



SA710B

SA720CN



SA300 SERIES

BATTERY SMOKE ALARMS

- Single button silence/test
- Tamper resistant design
- 9V battery powered
- 10 year warranty
- Also available with lithium battery SA305B

BATTERY SMOKE ALARM WITH ESCAPE LIGHT

- Model SA304CN same as above but with:
- Escape light illuminates path to safety
- Also available with lithium battery SA304LCN



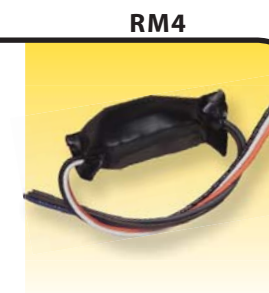
SA304CN



Miscellaneous

RELAY

- For BRK smoke and "smart interconnect" CO alarms
- 120-volt AC-powered.
- Form-C contacts that switch between normally open and closed contacts
- Maximum contact rating: 120-volt AC and 30-volt DC; Resistive-15 amps; Motor-1/3 horsepower
- 10 year warranty



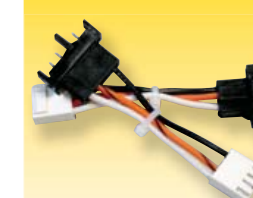
RM4

ADAPTOR PLUGS

- Easily connect competitive alarms without rewiring.
- For use with Firex® and Kidde® smoke alarms.
- Perfect for retrofit applications.
- 10 year warranty

Available: ADK-12 Kidde® adaptor
 ADF-12: Firex® adaptor

ADK-12/ADF-12



CO Alarms



CO250 SERIES

BATTERY CARBON MONOXIDE ALARM

- Advanced Electrochemical CO sensor
- Hinged cover for easy battery replacement
- Lighted Power and Alarm indicator
- Silence feature
- Tamper resistant locking pin
- End of Life signal
- 9V battery powered
- 5 year warranty

Available versions:
CO250B: Alkaline battery
CO250LB: Lithium battery

Multi-family Manager Tip: 9V batteries are less prone to tenant theft for use in other electronic devices due to their infrequent usage by manufacturers.

Listed to
UL 2034
Standard

Smoke & CO Combo Alarms

SCO2 SERIES

BATTERY SMOKE & CO COMBO ALARM

- Advanced Electrochemical CO Sensor & Ionization smoke sensor
- Two Latching features – Alarm Latch: Remembers which unit initiated an alarm. Low Battery Latch: Identifies which unit is in low battery condition
- Two silence features – can silence the low-battery chirp for up to eight hours or temporarily silence an unwanted nuisance alarm
- Intelligent Sensing Technology™ – helps reduce the number of nuisance alarms
- End of Life signal
- 9V battery powered
- 5 year warranty

Available versions:
SCO2B: Alkaline battery
SCO2LB: Lithium battery

IONIZATION

Listed to
UL 217 &
UL 2034
Standards



CO400 SERIES

BATTERY CARBON MONOXIDE ALARMS

CO400B

CO400B

- Advanced Electrochemical CO Sensor
- Front-access battery compartment - allows easy battery replacement
- Single Button Test/Silence
- Two silence features - can silence the low-battery chirp for up to eight hours or temporarily silence an unwanted nuisance alarm
- 2 AA battery powered
- 5 year warranty

CO410B with digital display

Same features as above plus

- Large display - shows visual confirmation of CO levels in PPM
- Peak Level Recall Button - recalls the highest level of Carbon Monoxide detected

Save 33% on annual battery replacement costs - Features 2 AA batteries vs. 3 for competitive products.



CO410B

Listed to
UL 2034
Standard

BATTERY PHOTOELECTRIC SMOKE & CO COMBO ALARM W/VOICE

- Voice Warning with Location: Exclusive! A voice will tell you the programmed location of unit and the danger detected.
- Advanced Electrochemical CO sensor & Photoelectric smoke sensor
- Optipath 360 Technology™ – patented technology provides 360° of direct access to the smoke sensors
- Two silence features - can silence the low-battery chirp for up to eight hours or temporarily silence an unwanted nuisance alarm
- Remote Controlled Test Silence: Use any remote control to silence unwanted alarm or to test alarm
- 2 AA battery powered
- End of Life signal
- 5 year warranty

FYI: "Voice with Location" provides necessary hazard location information for blind or visually impaired residents.

SCO7B



Exclusive!
Voice Warning!
WITH LOCATION!

Listed to
UL 217 &
UL 2034
Standards

Miscellaneous

PIR725R

MOTION SENSOR

- Motion sensing hands-free socket automatically turns on light when you enter room and off when you leave
- Installs in existing light socket
- Senses movement in all directions (12-foot range 360°)
- Works with incandescent bulbs up to 100 watts or compact fluorescent bulbs up to 50 watts.
- 3 year warranty

EL52-2/EL53W-2

ESCAPE LADDERS

- Strong steel construction with Slip-resistant rungs
- Large hooks secure easily to widow sills
- DuPont Cordura™ Nylon Strapping
- Fully assembled and ready to use
- Tested to ASTM standards
- 6 year warranty

Available: EL52-2 Two-story 14 foot long, and EL53W-2 Three Story 24 foot long



BATTERY PHOTOELECTRIC SMOKE & CO COMBO ALARM

- Easy alarm identification through different horn sounds and lights.
- Single Button Test/Silence
- Advanced Electrochemical CO sensor & Photoelectric smoke sensor
- 2 AA battery powered
- End of Life signal
- 5 year warranty

SCO5B



Listed to
UL 217 &
UL 2034
Standards

PRO2-5

PRO 2.5LB. MULTI-PURPOSE FIRE EXTINGUISHER



- UL rated 1-A,:10-B:C
- Rechargeable
- Commercial-Grade Metal Valve
- Easy-to-Read Pressure Gauge
- Bracket with Strap for Easy Mounting
- U.S. Coast Guard Approved
- Monoammonium Phosphate Extinguishing Agent
- 10 year Limited Warranty
- Model: FE1A10GR

Listed to UL 299, UL 711 Standards

MARINE1

MARINE 2.5LB MULTI-PURPOSE FIRE EXTINGUISHER



- UL rated 1-A,:10-B:C
- Rechargeable
- Commercial-Grade Metal Valve
- Easy-to-Read Pressure Gauge
- Bracket with Strap for Easy Mounting
- U.S. Coast Guard Approved
- Monoammonium Phosphate Extinguishing Agent
- 10 year Limited Warranty
- Model: FE1A10GR

Listed to UL 299, UL 711 Standards

PRO52A10

PRO 5LB HEAVY DUTY FIRE EXTINGUISHER



- UL rated 2-A:10-B:C
- Fits Easily Inside Standard Fire Box
- Commercial-Grade Metal Valve
- Rechargeable
- Ideal for Offices, Homes and Workshops
- Monoammonium Phosphate Extinguishing Agent
- 12 year Limited Warranty
- Model: FE2A10GR

Listed to UL 299, UL 711 Standards

HOME2

HOME 5LB HEAVY DUTY FIRE EXTINGUISHER



- UL rated 2-A:10-B:C
- Fits Easily Inside Standard Fire Box
- Commercial-Grade Metal Valve
- Rechargeable
- Ideal for Homes and Workshops
- Monoammonium Phosphate Extinguishing Agent
- 12 year Limited Warranty
- Model: FE2A10GR

Listed to UL 299, UL 711 Standards

AUTO5

AUTO 1.4LB FIRE EXTINGUISHER



- UL rated 5-B:C
- Unique Protective Bracket Mounts in Vehicles
- US DOT approved
- Push Button Pressure Check
- Sodium Bicarbonate Extinguishing Agent
- 10 year Limited Warranty
- Model: FESA5

Listed to UL 299, UL 711 Standards

KITCHEN5

KITCHEN 1.4LB FIRE EXTINGUISHER



- UL Rated 5-B:C
- Quick-Release Mounting Cap for Easy Access
- Push Button Pressure Check
- Sodium Bicarbonate Extinguishing Agent
- 10 year Limited Warranty
- Model: KFE2S5

Listed to UL 299, UL 711 Standards

PRO5

PRO 5LB HEAVY DUTY PLUS FIRE EXTINGUISHER



- UL rated 3-A:40-B:C
- Fits Easily Inside Standard Fire Box
- Commercial-Grade Metal Valve
- Rechargeable
- Ideal for Offices, Homes and Workshops
- Monoammonium Phosphate Extinguishing Agent
- 12 year Limited Warranty
- Model: FE3A40GR

Listed to UL 299, UL 711 Standards

PRO10

PRO 10LB COMMERCIAL FIRE EXTINGUISHER



- UL rated 4-A:60-B:C
- Fits Easily Inside Standard Fire Box
- Commercial-Grade Metal Valve
- Rechargeable
- Ideal for Offices and Commercial Applications
- Monoammonium Phosphate Extinguishing Agent
- 12 year Limited Warranty
- Model: FE4A60B

Listed to UL 299, UL 711 Standards

REC5

RECREATION 2LB FIRE EXTINGUISHER



- UL Rated 5-B:C
- Commercial-Grade Metal Valve and Trigger
- Easy-to-Read Pressure Gauge
- Bracket with Strap for Easy Mounting
- U.S. Coast Guard Approved
- Sodium Bicarbonate Extinguishing Agent
- 10 year Limited Warranty
- Model: FE5GR

Listed to UL 299, UL 711 Standards

GARAGE10

GARAGE 2.5LB FIRE EXTINGUISHER



- UL Rated 10-B:C
- Commercial-Grade Metal Valve and Trigger
- Easy-to-Read Pressure Gauge
- Bracket with Strap for Easy Mounting
- U.S. Coast Guard Approved
- Sodium Bicarbonate Extinguishing Agent
- 10 year Limited Warranty
- Model: FE10GR

Listed to UL 299, UL 711 Standards

Also available in Marine White color: AUTOMAR10

BRACKET2

2.5LB STEEL BRACKET



- Designed for secure mounting in Marine and vehicle applications
- Fits 2.5 lb. size canisters: First Alert models: FE5GR, FE10GR and FE1A10GR
- U.S. Coast Guard Approved
- 3 year Limited Warranty

Listed to UL 299, UL 711 Standards

BRACKET5

5LB STEEL BRACKET



- Designed for secure mounting in Marine and vehicle applications
- Fits 5 lb. size canisters: First Alert models: FE2A10GR, FE3A10GR and FE3A40GR
- U.S. Coast Guard Approved
- 3 year Limited Warranty

Listed to UL 299, UL 711 Standards

BRK[®]

THE PROFESSIONAL STANDARD

©2010 BRK Brands, Inc. a Jarden Corporation company (NYSE:JAH)
3901 Liberty Street Road, Aurora, IL 60504-8122
Phone: 630-851-7330 Tech Services: 800-323-9005
www.brkelectronics.com • www.firstalert.com CM3049